

January 2015

[www.nmra-scwd.org](http://www.nmra-scwd.org)

Volume 46 No. 5

*Happy New Year*



## Model Railroad School

Fun. Educational. Free.

Clinics and demonstrations show you how to turn a toy train into an exciting, operating model railroad. Hands-on projects for kids to take home.

**January 11<sup>th</sup>, 2015**

**Knights of Columbus Hall  
5256 Verona Road, Madison, WI  
[www.nmra-scwd.org](http://www.nmra-scwd.org)**

## SCWD Rail School 2015

Now that Christmas is behind us we can now look forward to our annual Rail School. The date this year is

### SCWD Meeting Schedule

January 11<sup>th</sup> 2015 1:00 pm. Rail School  
Knights of Columbus Hall  
5256 Verona Rd, Fitchburg, WI

**Clinics:** (No January Clinics, Rail School)

**Model & Photo Contests:**  
(No contests, Rail School)

### Next BOD

January 12<sup>th</sup> 2015 7:00 p.m.  
Fitchburg Fire Station

### Next Youth Group

January 11<sup>th</sup> 1:00 pm Rail School (see p. 5)

January 11<sup>th</sup>. This is when we open up our doors and welcome our neighbors in to enjoy a day of modeling and education. As part of our 501(c)3 commitment we must inform and educate the public about railroads and our hobby.

Keep in mind that Rail School is not just for kids, it is for anyone that is interested in modeling trains. No one ever graduates but there is plenty of homework. If you have one of those friends that just needs a slight push in the door then this is the time to commence pushing. Also, even if you didn't sign up for a table you need not stay away, we can always use a hand with room set up and other duties throughout the day. It's always a fun to share the fellowship that happens and it's a great way to

start off the New Yea. By the way, the entire staff of your Bad Order wishes you a

**Happy and Prosperous New Year!**

⊗

## Super's Report

Bob McGeever  
Division Superintendent

Every so often I will need to report on some facilities issues. This is one of those months.

The local chapter of the Knights of Columbus has listed their building for sale. There has been some interest shown in the building. We have been told that we should be able to hold all the meetings we have planned for January through May 2015 at the hall. But "should be" is not a firm commitment so the SCWD board is starting the search for a new meeting hall. The division currently has 155 members. About 90 of them live in Madison or an adjacent community. So it looks like another location in Madison is still the best fit for our division. We'll keep you posted as things develop.

On a better note, we have signed a five year extension of our contract to keep our Train Show at the Alliant Center. The plan is to stay with the floor space we used last year. We looked into moving the show to new heated hall built for the Dairy Expo. It would be less expensive than the space we currently rent. But it is a little bit smaller than the space we currently rent. Plus there would be no shelter from the weather for all the folks standing in line for tickets. We want to be a family friendly show and leaving all those parents standing in the cold, the wind and the precipitation that we typically get is just not a good idea. Speaking as someone who used to be one of those parents, those warm and dry hallways we get to use in our current set up are really important. So as long as we can make the finances work, we plan to stay in the Alliant Center.

Hope to see you at the Rail School in January.

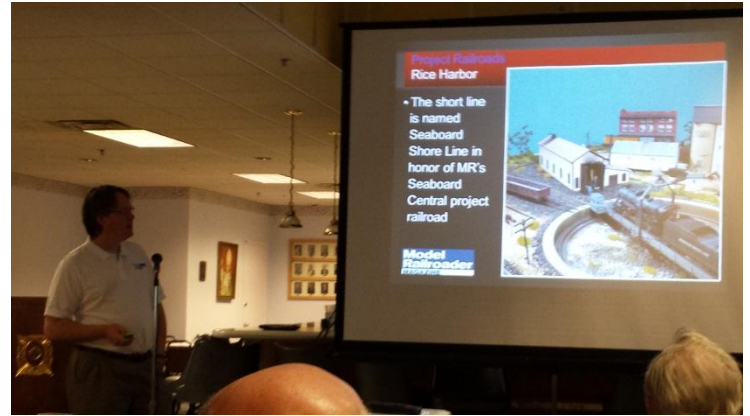
Bob.

⊗

## The Clinic Corner:

Fred (Rob) Robinson

I would like to thank all the clinicians who presented clinics for us last year and look forward to more live presentations next year. I hope I haven't omitted anyone; thanks to Ken Hojnacki, Keith Thomsen, Bob Wundrock, Sean Lamb, Chris Roeben, Ryan Lamb, Fred Firkus, and Gregg Condon.



As you seen at the last meeting local clinicians from the division are welcomed just as much as those from out of the area. If you would like to do a clinic give me a call. My contact info is in the Red Book.

⊗

## Layout Tours:

Phil Hottmann

It was great to see George Elder's layout again. His lighted scenes are remarkable.

He has a very interesting story on how his layout design started with his trains running around his Christmas tree. We will not have any tours in January due to the Rail School, but hope to put something together for February. All things ran great and every one enjoyed the tour.



George Elders Downtown

Photo P. Hottmann



George Elder

Photo P Hottmann

I still have openings for the February and March meetings. If you are interested please let me know. My contact info is in the Redbook

If you haven't been open for a while please consider doing so. Model railroads are never done. The group always appreciates your work.

⊗

### Contest Column:

Dave Lendved Nikki Roeben

**No January Contest**  
**Rail School, Jan, 11<sup>th</sup> 2015 1. p.m.**

Thanks to all who brought their models and photos this past modeling season. We wish all a very Happy New Year. We will see you at Rail School.

### Favorite Train



### Photo and Model contest results

#### Favorite Train

Nikki Roeben/Dave Lendved

#### Model Photos:

Steam	1 <sup>st</sup> & 2 <sup>nd</sup>	Steve Lanphear
Electric	1 <sup>st</sup>	Steve Lanphear

#### Proto type photos:

Diesel	1 <sup>st</sup>	Sean Lamb
	2 <sup>nd</sup>	Sean Lamb
		Ewing Row
		Steve Lanphear
	3 <sup>rd</sup>	Ewing Row
		Steve Lanphear

Electric	1 <sup>st</sup>	Steve Lanphear
Doodle Bug	1 <sup>st</sup> & 2 <sup>nd</sup>	Ewing Row
	3 <sup>rd</sup>	Steve Lanphear

#### Model Contest

Gas/ Doodlebug	1 <sup>st</sup> & 2 <sup>nd</sup>	Rusty Schramm
Diesel	1 <sup>st</sup>	Rusty Schramm
	2 <sup>nd</sup>	Les Ferge
	3 <sup>rd</sup>	Cheryl Mitchel
Steam	1 <sup>st</sup>	Les Ferge

### Modeling Project 2015

Ewing Row Modeling Project Chair

**Change your Xacto blades often**



Nothing! Nothing! Absolutely nothing beats a sharp blade.

That fact was brought home to me when I was preparing the Youth Group branch line station kits. The idea was to make the Youth Group kits easier to put together than the adult ones. Therefore, a different kit, an easier kit, was what I needed. I also needed a kit that required no cutting.

When looking at an old Kalmbach book, Easy-to-Build Model Railroad Structures, I ran across the Youth Group project, a tiny branch line station. How old is the book? I paid \$4.50 for the 1958 published 98-page book, soft cover as most of them are. The branch line station article said the prototype was on the North Lake, Wis. branch of the Milwaukee Road in Sussex.

Back to sharp blades: To make the kit simple to build, I thought that all the cutting should be done. Each station has two windows and two doors, as well as a front, back, two sides, a floor and a sloping two-piece roof. Total kits needed numbered nine, eight HO and one N. Therefore, from the basswood, I cut out 18 doors and 18 windows, in addition to the basic structural pieces.

That is more windows and doors I ever want to “Xacto” in a short period of time. Hence my belief, that nothing beats a sharp blade. I probably changed blades after every two buildings. To make it easier, I maybe could have done it more often. The message is, as you begin your speeder shed, grab a new blade.

One final thought: a tip I’ve seen in more than one place is to put masking tape on the back side of the basswood you are going to cut, especially if the cuts are intricate and you are left with narrow pieces of basswood as part of your finished project. I applied blue masking tape to the back side of the first two kits when I cut out the window and door openings. For the third kit, I used no masking tape. I found it made no difference whether tape was present or not. I don’t recommend using masking tape; it is another step which takes time when applying and removing.

Incidentally, what little arthritis I have in my fingers was at its worst when I was working on the branch line station kits. I’m sure it was due to the effort I put into handling the Xacto knife; I’m much better now that my fingers aren’t so active.

⊗



## Midwest Region News

The next Midwest Region convention will be held at Manitowoc WI and is called **The Lake Shore Limited**. WinnebagoLand Division is the sponsoring division and the date is April 17 – 19, 2015 in Manitowoc WI. The convention Hotel is the Manitowoc Holiday Inn. They have special room rates available. The rooms are available to book now. A sign up form is here in the Bad Order on page 10. There is also more detailed information such as what’s going at the convention in the electronic edition of the Bad Order [www.nmra-scwd.org](http://www.nmra-scwd.org). And you can also find more info at [www.mwr-nmra.org](http://www.mwr-nmra.org)

Superintendent James Cruthers has a committee that is getting all the ingredients put together for another fine MWR convention. In addition to the entire rail



programs, layout tours and op sessions there are a number of non-rail activities such as Project Linus and things for your non-rail friends and relatives to participate in. So, visit the on line edition for the total overview.

For newer members, a Regional convention is an opportunity to see what goes on at conventions and seeing how other divisions operate. You get a lot of the same types of offerings that you would find at a national convention but without the long and expensive travel to a large city or the high cost of a downtown hotel.

National Conventions are a lot of fun as well. They last a week and have things going on every day. I plan on attending the convention in Portland in 2015 along with a group of SCWD members and in 2016 the Central Indiana Division will sponsor the NMRA National Convention. But, in the mean time I will attend the Lake Shore Midwest region Convention in Manitowoc. Regional conventions are closer and a lot more pocket book friendly.

**Make your plans now and come up and join us in Manitowoc**

⊗

## From the Help Desk:

### MODELING WATER (INDOORS)

Ned Ferguson NMRA member since 1981

Note: I gave a live clinic on this topic 4 years ago or so. It is a hard clinic to do live as the materials take hours to days to set, and without being able to pour the materials and mold and color them live, and scenic the water (logs, boats, junk, people etc.), it is better to do a clinic over days on video.

However I thought this would be a useful summary. The large river I have on my O scale layout took me months to perfect and I discovered the best materials for me were by trial and error. Anyone can call me to look at my river and talk to me about it.

**FIRST-**Prepare your scenery base-the materials find any hole and go to the floor. This includes embankments. Use plaster or latex paint to seal the base of the area you want water to be located. **DO NOT** use real water indoors; humidity, leaks, mold, eventual costs \$\$\$\$.

**AVOID** Castorite resin, odor very toxic.

**ENVIROTEX:** Is good for small ponds, ditches, streams-but costly. You have to mix 2 parts equally almost exactly 50-50, and it still finds any hole and seeks its own level. Hard to make waves, whitecaps-have to time when the material sets up which is a pain, otherwise it settles out flat again. Bubbles can appear if initial pours are too deep (over 1/8 inch)-heat from hair dryer can eliminate. No significant odor.

**WOODLAND SCENICS REALISTIC WATER:** About the same concerns as envirotex, but no mixing, no bubbles. Costly so use it for small areas.

**WOODLAND SCENIC WATER EFFECTS:** Very easy and useful for waves, whitecaps as it sets up quickly and does not settle back down. It is a bit costly but not if you're using it just for waves, whitecaps special effects.

**GLOSS MATTE MEDIUM:** Costly but my favorite. Easy to brush on multiple layers (unlike pouring the others), thin layers and build up to effect you want. Use thick layers for whitecaps.

I did most of my river this way. This material is found in any arts and crafts store. Like the above materials, a TINY DAB of acrylic paint like blue, green, mud, etc. colors the water.



# ADAIR SHOPS

*Weight Upgrades for Improved Model Railroad Operation*



**Weight upgrade kits for  
HO freight and passenger  
cars (RTR and kits)**



**HO steel plate  
and beam load kits**



**HO & N bridge kits**

**For a complete list of kits, along with additional  
photos and sale items, visit our website.  
[www.adairshops.com](http://www.adairshops.com)**

Adair Shops, PO BOX 344, Dyersville, IA 52040  
[adairshops@yousq.net](mailto:adairshops@yousq.net)

**CLEAR SILICONE CAULK:** Cheap and ideal for waterfalls and rapidly flowing water. Waterfalls-plaster base colored dark, then tease in some cotton balls into caulk to shape the falls and give it the image of water rushing over rock outcroppings. Play with it-see what happens. This is how I did waterfall on my layout falling into my river.

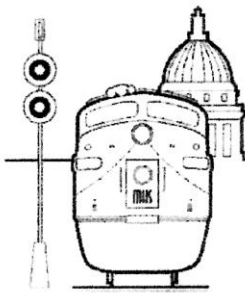
**AQUARIUM FILTER FIBER:** Supposed to work well for waterfalls, on saran wrap or scotch tape backing. I would add clear caulk also. Play with it. I have not tried it but I presume cheap.

**TITANIUM WHITE PAINT: ACRYLIC,** brush on to simulate white caps, waves, falling water on top of your material base (whatever you choose for your main water base). Brush on lightly-to get effect you want.

**MODELING WATER** takes practice-start with small area to see how it goes. But the end result is cool and really adds to a layout.

Ned





# MADISON HOBBY STOP



6622 Mineral Point Road, Madison, WI 53705

phone: 608.829.3820 • fax: 608.829.3842 • www.madisonhobbystop.com

Hours: Monday - Friday (10am - 8pm) and Saturday (10am - 5pm)

Model Railroading • Plastic Model Kits • Rockets & Accessories • Pine Car • Paints • Tools and more!

## SPECIALS!

**Thank you to all our customers for making this another great year for us. We appreciate your business and look forward to serving you in the future!**

Many items in stock to spend that Christmas money on, inventory coming in everyday  
New/old consignment coming in weekly, we have the best selection.

Atlas and Athearn new items starting to come in finally

**Now Open Sundays 12:00 – 5:00**

**For all your needs we have the items in stock always.**

Thank you for your continued support

**Remember, most model railroad items are  
20% off**

With a valid NMRA or other club id card

*Excludes discounted or sale items, magazines, and consignments*

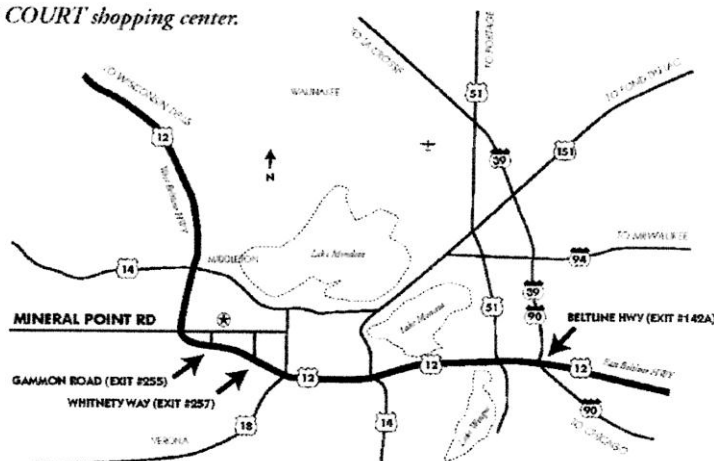
**20% off Athearn, Atlas, Kato, and Life-Like  
Pre-Orders**

**Authorized Lionel Dealer**

*Located INSIDE the CLOCK TOWER COURT shopping center.*

**Directions:**

**From points east:** Take I-39/I-90 to exit #142A to East Beltline Highway. Proceed west for 12 miles and take Gammon Road exit #255 north to Mineral Point Road. Take a right on Mineral Point Road and then left on Grand Canyon Road, then turn right into the *Clock Tower Court Shopping Center*. Distance from I-39/I-90 exit #142A to Gammon Road exit #255 via Beltline Highway is 11.6 miles. **From points west:** Take the west Beltline Highway east to Gammon Road exit #255. Take Gammon Road north to Mineral Point Road. Take a right on Mineral Point road and then left on Grand Canyon Road, then turn right into the *Clock Tower Court Shopping Center*.



Photography  
by

**Sean  
Lamb**

- Completed layouts
- Portraits
- In-progress models
- Any scale/gauge

Call for a free quote



<http://seanlambphoto.com>  
[sean@seanlambphoto.com](mailto:sean@seanlambphoto.com)  
 608-213-6414

# HOBBY HORSE

RADIO CONTROL • HOBBIES • CURLING SUPPLIES  
 DIVISION OF HOBBY HORSE WISCONSIN, INC.

JIM BIERSACH  
 President

1769 THIERER ROAD  
 MADISON, WI 53704  
[hobbyhorse@hobbyhorse.com](mailto:hobbyhorse@hobbyhorse.com)

(608) 241-3491  
 FAX (608) 241-1313  
 1 (800) 604-6229

## Train Guyz LLC

*We can make your Model Railroad dreams come true*

2903 Robin Court  
 Fitchburg WI. 53711  
 608-215-6346  
[Vivion2@tds.net](mailto:Vivion2@tds.net)

*Mike Vivion*

## Advertising rates:

Our advertising rates are pro-rated for our 11 issue printing cycle, starting in September of each year. For more information contact the Bad Order Editor at email [SCWDeditor@charter.net](mailto:SCWDeditor@charter.net).

Full page \$110/yr.  
 Half page \$55/yr.  
 Quarter page \$30/yr.  
 Business card \$25/yr.

### BOD Meeting Minutes

Can be found on the SCWD website version of the Bad Order [www.nmra-scwd.org](http://www.nmra-scwd.org).

## The Hobby Depot

**Brian Stackpole, owner**



See us on the web at: [www.hobbydepotmonroe.com](http://www.hobbydepotmonroe.com)



835-17th Street  
 Monroe, Wisconsin 53566  
 Phone: 608-325-5107

Call ahead to be sure we're open!  
 email: [hobbydpo@tds.net](mailto:hobbydpo@tds.net)

**TRAINS & MORE**

### Lake States Railway Historical Assn.

*Dedicated to professional collections management.*

Richard R. Goddard  
 President

BARABOO ARCHIVES  
 319 Water St., Suite 800  
 Baraboo, WI 53913  
 Phone: 608-356-5555  
 Website [www.lsrha.org](http://www.lsrha.org)

LSRHA is a 501c3 non-profit educational corporation.

### THE RAILWAY MODEL BUILDER'S RESOURCE...

Our *Baraboo Archives* collections include over 20,000 C&NW and Omaha original technical drawings 1870's to 1950's. Subjects include steam power, freight & passenger cars as well as structures; many unique to LSRHA. Library includes Official Guides 1878-1979, many employee timetables of western Great Lakes, thousands of photos and books. Descriptive drawing listing collection CD's are now available: Address inquiries to our Email address at: [lakestatesarchive@gmail.com](mailto:lakestatesarchive@gmail.com)

## From the files of Errata Data:

Paul Mangan

This month I am pleased to announce that former SWD Bad Order Editor, Chris Roeben is taking on the task of guest writer for Errata Data. Please enjoy Chris's writing that I will call;

### Tales from the Road

So there you are, standing at a table full of railcars priced low. You want to get a few because hey the price is right. But in the back of your mind you're thinking, where am I going to place them, I have no room! The real railroad doesn't have this problem, right? Wrong! This past November the Burlington Northern Santa Fe Railroad (BNSF) was forced to put a moratorium on any new tank car purchases by any of its customers in the Bakken Shale region due to lack of room on the railroad. This year's record corn and soybean yield has put an extra constraint on an already congested operating region. The moratorium is in effect until next spring once most of the fall harvest has made it to market and thus easing the capacity issues the railroad is facing now.



Now, while this is only a temporary solution to a growing problem facing the BNSF, they are looking to the future today.

Closer to home, in the SCWD, city and state officials given the final go ahead to the BNSF to add a second main between MP 300.0 (La Crosse Yard) south to CTC Graf (south side of La Crosse near US 14&61). This project involves filling in the wetlands along the right of way, moving 2 golf holes and path improvements at the local golf course, and the closing of two little used public street crossings. As of mid-December a crew from Texas has been in town to start the work of re-signaling the line to upgrade from TWC

to CTC in the eight mile stretch and the addition of power switches for crossovers to be installed. This will relieve congestion issues in La Crosse coming into the yard, and once a replacement span is built in the place of the former span that was taken out of service by the new span over the Wisconsin River at Wyalusing, WI, will the BNSF have constraint free movement from La Crosse to East Dubuque, IL. East Dubuque is shared trackage with the Canadian National Railroad until reaching Galena Jct.

So next time you're thinking the real deal doesn't have the same issues as you when it comes to running out of room to operate. Think again. There's just on a larger scale.

Chris Roeben

Thanks Chris, This is what Errata Data is all about. I am always looking for articles from members for this column because I will eventually run out of things to write about. I know some of you are thinking please let us know when you're getting close so we can get the party started.

All kidding aside, my contact info is in the Red Book so commence to writing and send in an article to share.  
Paul

### Youth Group Report:

Steve Brist

On Sunday December 21, the Model Railroad Youth Group took a field trip to see the holiday G scale trains at Olbrich Gardens. This is an annual event for us and our hosts were Paul Mangan, the editor of the SCWD Bad Order newsletter and SCWD member Donn Tolley. Donn and his wife Rose along with Paul are also members of the Wisconsin Garden Railway Society and are just a few of the G scale train operators at Olbrich



2014 – 2015 edition of the SCWD youth Group.





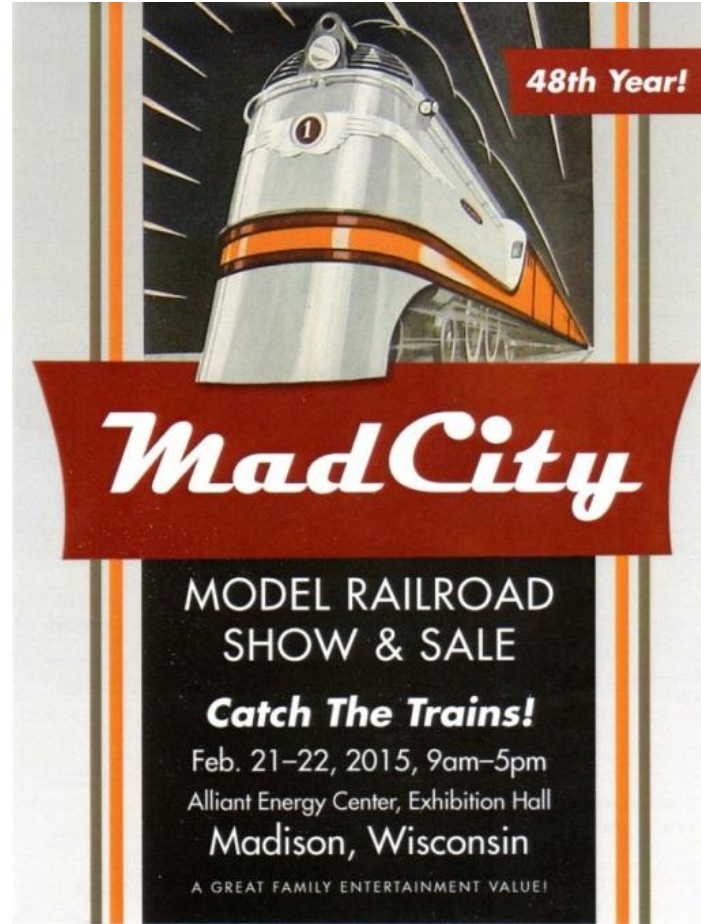
For more photo's go to page Auld Lang Zine



On Sunday January 11, we will participate in the Rail School and February 21 and 22 we will staff our booth at the Mad City Train Show at the Dane County Expo Center/Fairgrounds. If you sign up to work at our booth for a 2 hour shift, you will receive free admission to the Train Show.

Al Potts, a member of the adult group, has offered to host an Operating Session on his very nice model railroad at his home on January 18. This is the third Sunday in January, our normal meeting date. I expect that we will meet at the parking lot of the Knights of Columbus (our normal meeting place) at 1 PM and then "caravan" to Al's nearby house.

Happy Holidays from the Youth Group  
 Steve  
 ⊗



### SCWD Board of Directors November 10, 2014

Superintendent Bob McGeever called the November 10, 2014 South Central Wisconsin Division of the Midwest Region, NMRA, board of directors meeting to order promptly at 7:00 p.m. Present were Bob McGeever, Phil Hottmann, Mike Vivion, Phil Berry, John Haverberg, Alan Paine, Ned Ferguson and Ewing Row.

McGeever declared a quorum present. On a motion by Mike Vivion and a second by John Haverberg, the board passed the minutes to the October 13, 2014 board of directors meeting.

Paymaster Phil Berry provided reports for both September and October. The two reports were approved by the board following a motion by Ewing Row and a second by Mike Vivion.

The Midwest Region of NMRA agreed to reimburse SCWD for the \$600 the division spent recently on Blue-Box kits to be used at Rail School, as well as other occasions. Reimbursement will be \$500 this year and \$100 the next.

Train Sets for the Mad City Rail Show in February 2015 will cost \$130 apiece; eight will be given away as door prizes.

Future clinics include Bob Wundrock, DCC decoder installation, and a representative from Model Railroader magazine.

Ned Ferguson is new on the membership committee. He has a number of ideas to boost membership in the

## **It's Volunteer Season again**

Well, it really is always volunteer season in the SCWD! In the course of producing an agenda that keeps people staying tuned in and active we are always in need of volunteers. Our members always come out and step up to do their part in making this division a successful organization.

Rail School is always the first event of the year as it substitutes for our meeting in January. This is a great time to work on recruiting new members as we welcome in the public and show them what we are all about.

For those of you who are new to the division or have not been to our Rail School I encourage you to come out to the see this event.

The Great SCWD Rail Show Round Up is now underway. I have begun signing members up for the show so if you have a time slot you would like to have don't wait till the last minute. If you need a new shirt or this is your first time volunteering come on in to a meeting and see me at Rail School January 11<sup>th</sup> and I can get you all spec'd up.

The Saturday spots are almost all filled but there are still some Sunday spots open. On Friday the hardest working men and women in show business meet for breakfast at 7:00 and then load up the truck to get our stuff over to the show and then spend the day setting up the ticket booths, hanging signs and various other jobs

SCWD. He plans on using the door prize sign-up list, NMRA new-member list, follow-up phone calls to new members and possibility of a list of those in SCWD who can help with layouts or have expertise in particular areas of model railroading. He suggested, too, having a booth at the February rail show.

Phil Berry is working on the Rail Show contract with the Aliant Energy Center. He must meet again with Energy Center representatives.

The meeting adjourned at 8:15 p.m. on a motion by Phil Berry and a second from Mike Vivion.

Respectively submitted  
Ewing Row, Chief Clerk

we need to get done. If you can make Friday morning let me know, we can always use some more help.

Art Dawson is our Mad City Model Railroad Show and Sale chair and leads a great staff that performs those jobs that need to be done every year. Art's leadership in this roll is very exceptional. This show like any show doesn't just come together by itself.

This time of year is when I need to set up the calendar for the season ahead. I start asking those questions again like "can you do xxx for us" to which I almost always get a positive response. If it doesn't already have a month I would like to declare December as SCWD Volunteer Month!

Thank you all for your efforts.

⊗

## **2016 Version of the Red Book:**

Our division Red Book is printed every 2 to 3 years. It takes about nine months to get it all together.

What is different these days is that in order to have your name in the Red Book two conditions must be satisfied; first you must be an NMRA member and reside in the boundaries of our division; second you must sign a document allowing me to place your information in the book.

### **This book is only for SCWD/NMRA members.**

I plan on getting started soon after the Mad City Train Show. Even though you may have signed off for the last issue you will need to do it again.

# Holiday Train Shows 2014

I hope that you had a chance to visit some of the holiday train displays or shows somewhere in or near your town. These usually feature garden scale trains of all types from 1:33 to 1:20 scale and everything from prototype to fantasy types and not to forget live steam. Some locations also have themes involved where other groups participate with background surrounding the layouts.

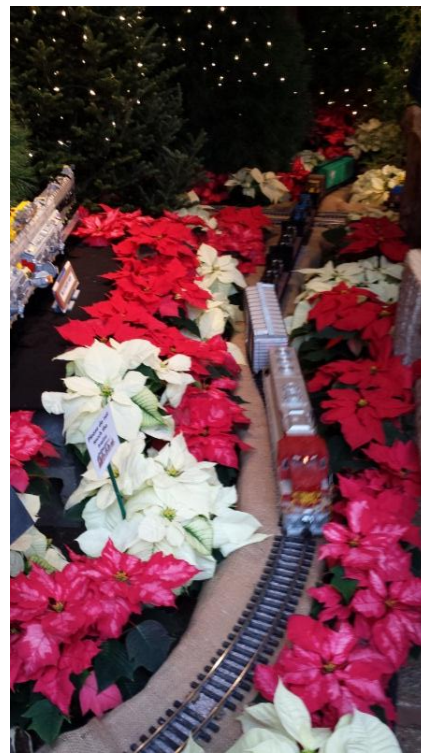
Here in the Madison area we have Olbrich Gardens on Madison's East side that hosts the Holiday Express each year.



Lego displays at Olbrich Holiday Express



As most of you know there are a few of us in the SCWD that also belong to the Wisconsin Garden Railway Society (WGRS). In November each year a crew of volunteers set up the tracks at Olbrich Gardens according to the plans that are on file at the gardens. After the tracks are laid down the staff at the gardens takes over and brings in the trees and flowers to give the holiday feel. When they are done the people that are involved with whatever the theme is for the current season show up and do their job to finish it off. This year the theme had to do with Lego's and a fine job was done.



This theme varies each year and we never know what it will look like before we set up the tracks. We have not been disappointed yet only amazed at the fine crafts these artists create for our trains and the visiting public.

Only a short drive to the south in Janesville WI, Rotary Gardens hosts the Holiday Light Show.

The outside display was awesome with all the trees decorated in gleaming colors while on the inside there is always some holiday socializing and in the middle of the main room is a G scale layout on the floor.



The WGRS also sets up this layout each year. There is also a train set raffle to boot. This past year we were privileged to have a second train set donated to us for the raffle. Each evening the attendees are treated to a different holiday presentation such as a singing group singing songs of the season or a visit from Santa. And of course they have hot chocolate and hot cider available.

If you missed this sight this year then write it down on that new calendar you got for Christmas so you don't miss it next year.



# Auld Lang Syne 2014



Summer picnic 2014



Rail Show 2014



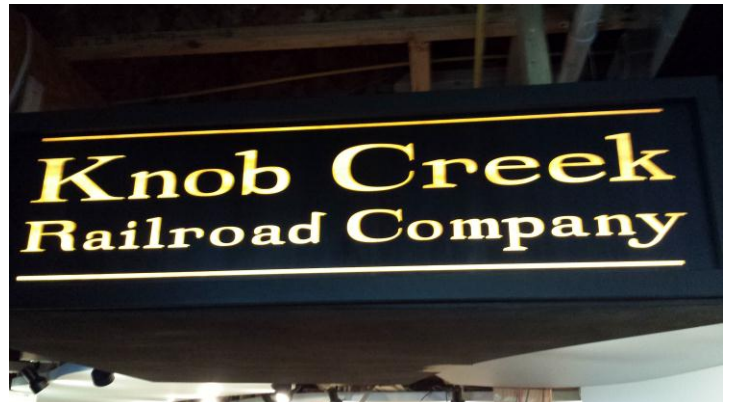
Layout tours 2014



Moving the show stuff to a new shed! Hey , at least it is not snowing



Rail School 2013



So let's hit the ground running into 2015



## In the Station:

O the weather outside is frightful but Rail School is so delightful a great place to learn new skills, about trees and tracks and hills.

Rail School is almost here so remember it is not just for kids, even though the kids get a model car to build and take home. As the little tune above says come on in and learn more stuff about making trees, laying track and or scenery. There are no exams and no pop quizzes. The best part is no one ever graduates because we are always continuing to learn. .

Happy New Year from the Bad Order Staff

See you by the Rails  
Paul



## PLEASE PATRONIZE OUR AREA HOBBY STORES And our Advertisers

Hobby Horse – 1769 Thierer Road – Near East Town, Madison WI

The Hobby Depot – 835 17<sup>th</sup> Street – Monroe WI

Madison Hobby Stop – 6622 Mineral Point Rd (inside Clock Tower) – Madison WI \*

\* = Mad City Model Railroad Show and Sale advance sale ticket outlet

### 2014 - 2015 Meeting and event Time Tables

Regular	Train Show Staff	BOD	Youth Group
Dec 7 <sup>th</sup> 2014	Dec 3 <sup>rd</sup> 2014	Dec 10 <sup>th</sup> 2014	Dec 16 <sup>th</sup> 2014
Jan 11 <sup>th</sup> 2015 (Rail School)	Jan 7 <sup>th</sup> 2015	Jan 12 <sup>th</sup> 2015	Rail School
Feb. 1 <sup>st</sup> 2015	Feb.4 <sup>th</sup> 2-15	Feb. 9 <sup>th</sup> 2012	Rail Show

**Note: Train Show Staff now meets on the 1<sup>st</sup> Wednesday of the month**

**LAKE SHORE LIMITED  
MIDWEST REGION CONVENTION  
MANITOWOC, WISCONSIN  
APRIL 17-19, 2015  
Sponsored by the WinnebagoLand Division**



Registration Form			
<i>Complete this form, print it and mail it to the Registrar together with your payment</i>			
Name:		NMRA #:	
Name(s) of non-rail Companion/ Family Member(s):			
Street (Mailing) Address:		Division: Region:	
City:	State:	Zip Code:	
Phone:		E-Mail Address	
Primary Scale (Check One): Z _____ N _____ HO _____ S _____ O _____ G _____ Other _____			
Primary Gauge: (Check One): Standard _____ Narrow: n2 _____ n3 _____ nOther _____			

Registration Fees		
<i>Pre-Convention Early Bird Rate – Before April 1<sup>st</sup></i>	<i>Postmarked after April 1<sup>st</sup> (includes on-site registration)</i>	Amount
Rail – NMRA member (requires NMRA #) _____ X 30.00	Rail – NMRA member (requires NMRA #) _____ X 40.00	
Rail – non-NMRA member _____ X \$40.00	Rail – non-NMRA member _____ X \$50.00	
Non-Rail _____ \$20.00	Non-Rail _____ \$25.00	
Saturday evening banquet: add \$25.00 per person – Banquet must be postmarked by April 1, 2015		
Total		

Vendor Information/Registration	
Vendor Table Rental	Amount
<i>First Table - \$15.00</i>	
<i>Each Additional Table - \$5.00</i>	
<i>Do You Require Electricity? (Additional \$25)</i>	

**Non-Rail: Project Linus**

Join us for a day of fun, creativity and feel-good service at the Project Linus room. Come for an hour or the day. We will have at three sewing machines, fabric and tools to create beautiful quilts and pillowcases. If you are able, bring your own sewing machine, and favorite quilting tools. Sign up for this on the registration form.

Will you be participating in the Project Linus non-rail activity? \_\_\_yes \_\_\_no; Will you bring a sewing machine? \_\_\_yes \_\_\_no

**Operating Session**

The Operating Session will be held Friday, April 17, 2015 and we will offer three sessions, morning, afternoon, and evening. Participation will be based on the number of people signing up for the session against the number of layouts that are available. Place a check mark for the sessions you wish to attend. To participate in the Operating Session your registration form MUST be postmarked on/before **March 15, 2015.**

	Morning (9-12) _____ Afternoon (1-4) _____ Evening (5-8) _____
--	--

**Make check or money order out to:  
WinnebagoLand Division**

**Hotel Info:** Holiday Inn, 4601 Calumet Ave Manitowoc, Wisconsin 54220

**Send payment and registration to:**

Make reservations direct at: **920-682-6000**  
 Group code: **National Model Railroad Association**  
 Room rate guaranteed through **March 19, 2015;**  
 \$99.00 (1-4 people per room) +tax/night

Lynn Jasch  
 WLD Registrar  
 1850 Adler Way  
 Green Bay, WI 54303-3303

**Do not mail registration form after April 7th 2015**



## **2015 NMRA Midwest Region Spring Convention – the Lake Shore Limited**

The WinnebagoLand Division will host the Lake Shore Limited, the Midwest Region's spring convention. Convention activities will take place at the Holiday Inn, Manitowoc, Wisconsin on April 17-19, 2015.

The convention will include:

1. Nine layouts between Manitowoc and Two Rivers, WI hosting Operating Sessions on Friday including morning (9-12), afternoon (1-4), and evening (5-8) sessions. Space is limited so early registration is recommended.
2. Rail clinics: Two clinics Friday night and 18 clinics Saturday morning and afternoon.
3. Non-rail: Project Linus (three sewing machines provided – bring yours if you are able).
4. Non-rail clinics
5. Vendors and Swap Meet open Saturday
6. Saturday evening banquet (buffet style); dietary concerns will be directed to the hotel banquet manager.
7. More than 14 layouts open for tours on Sunday, 4/19/15 in a variety of directions from Manitowoc.
8. NMRA judged model and photo contests.
9. A Popular Vote model contest.
10. WinnebagoLand Division and Midwest Region Membership Meeting Saturday evening following the banquet speaker and MWR Board of Director's meeting Sunday morning.
11. Tour the Manitowoc Maritime Museum and the USS Cobia, a CATO-class WWII submarine. Cost is \$10 per person (with convention badge) any day of the convention. Pay directly at the Maritime Museum only if you go!

**The Holiday Inn Manitowoc**, 4601 Calumet Ave, Manitowoc, WI 54220; (920)682-6000, was completely remodel in 2014, is located off Interstate 43 and Hwy 151 with easy access to the operating session layouts and layout tours as well as a variety of nearby restaurants. A special discounted group room rate of \$99.00 (1-4 people per room) + tax/night. Guests should call the hotel direct at 920-682-6000 to make reservations. Please reference Group Code: National Model Railroad Association when making reservations. Reservations must be received by March 19, 2015 or Holiday Inn will not be able to guarantee the holding of these rooms. All members are

invited to attend and guests are welcome! Go to the WinnebagoLand Division's website for the latest details of the event and see photos of the railroads on the tour and open for Operations.

**Non-Rail Activity:**

**Project Linus:** Join us for a day of fun, creativity and feel-good service at the Project Linus room.

Come for an hour or the day. We will have at least two sewing machines, fabric and tools to create beautiful quilts and pillowcases.

If you are able, bring your own sewing machine, and favorite quilting tools.

Sign up for Project Linus on the registration form.

**Non-Rail Clinics:**

**Cindy Ellenbecker of Bleating Heart Haven** (Saturday). Since 1985 Cindy has been raising Sheep, Angora goats, and Angora bunnies for their fiber/fleece. She will allow clinic participants to see up close the fibers and run their hands in among the fibers to feel the difference. (Angora goats are where mohair comes from). She will show and explain how the fleece is "skirted" (picked through after shearing before being washed), explain the scouring and picking process (hand operated equipment that opens up the fibers), show the carding process using hand carders (the old-fashioned way) and a drum carder that is cranked. Next will be a demonstration of the spinning and dyeing process and finally everyone will be able to see the finished yarn product. For more information about Bleating Heart Haven visit her website at: <http://www.bleatingheartaven.com/>

**"Attracting Backyard Birds" by Tammy Borden, Master Gardener Presentation**

**Stress Management and/or Mindfulness Presentation**

**Some other things to do during the convention:**

**Wisconsin Maritime Museum and USS Cobia tour:** The Wisconsin Maritime Museum is offering Lake Shore Limited convention attendees the opportunity to tour both the maritime museum and the USS Cobia for a per person price of \$10 (paid at the museum) during the convention. You must show your convention badge for the deal. For more information about this visit their website at: [www.wisconsinmaritime.org](http://www.wisconsinmaritime.org).

**Kohler Design Center and Factory** (Kohler is about 30 miles from Manitowoc). The Kohler Design Center is a showplace for their one of a kind fixtures. The Design Center offers guests three floors to tour, the Kohler History Museum, their product floor, and a mezzanine with designer bath displays. Open to the public seven days per week (Monday through Friday 8-5 and Saturday-Sunday 10-4) it offers the opportunity for a self-guided tour. Visit their website at: [www.us.kohler.com/us/Kohler-Design-Center](http://www.us.kohler.com/us/Kohler-Design-Center).

**Kohler Factory Tour:** Offered Monday through Friday the tour starts at 8:30 AM and runs three hours with a walking distance of 2 1/2 miles (must be at least 14 year of age for the tour). There is no charge for the tour but if interested in this option you MUST register at least two weeks in advance. If you are interested in participating in the Kohler Factory tour call 920-457-3699 to register. For more information about the tour visit their website at: [www.americanclubresort.com/activities/tours/kohler/factory](http://www.americanclubresort.com/activities/tours/kohler/factory).



**Rahr West Art Museum:** If you have time and are interested in art, the Rahr West Art Museum is a great place to visit. Several years ago USA Today cited the Rahr West as one of the best art museums in a small town. During the convention the museum will be hosting three separate exhibits, their permanent collection, a local high school art exhibit and the local home school art exhibit. Admission is free. For more information about the Rahr West visit their website at: [www.manitowoc.org/index.aspx?nid=1006](http://www.manitowoc.org/index.aspx?nid=1006)

Registration forms are available on the website. Go to: <http://www.wld-nmra.com/?action=meets>

